

Total squares **32.8sq**

 **4**  **2.5**  **2**



FLOORPLAN OPTIONS

All available ready-to-go floorplan options for this design can be viewed on the following pages, or visit www.burbank.com.au.




Facades available:

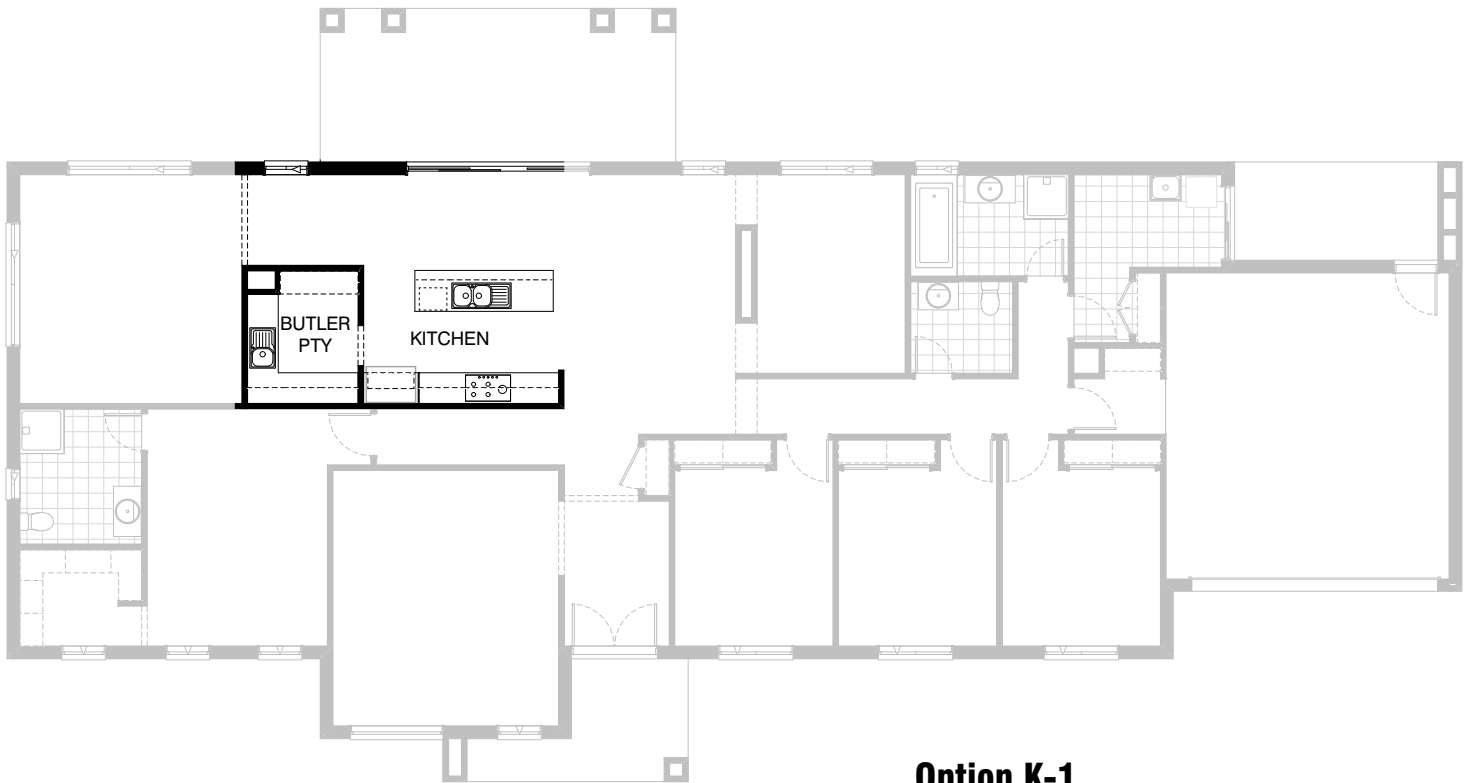
Drysdale, Arkley, Haring	
Dowd, Nolan	
Overall home width	28.43m
Overall home length	15.11m

Residence	230.6m ²	24.8sq
Garage	37.1m ²	4.0sq
Verandah	8.5m ²	0.9sq
Porch	7.6m ²	0.8sq
Alfresco	20.8m ²	2.2sq
Total	304.7m²	32.8sq

Listed details based on Drysdale façade floorplan (illustrated)

FLOORPLAN OPTIONS

 **4**  **2.5**  **2**

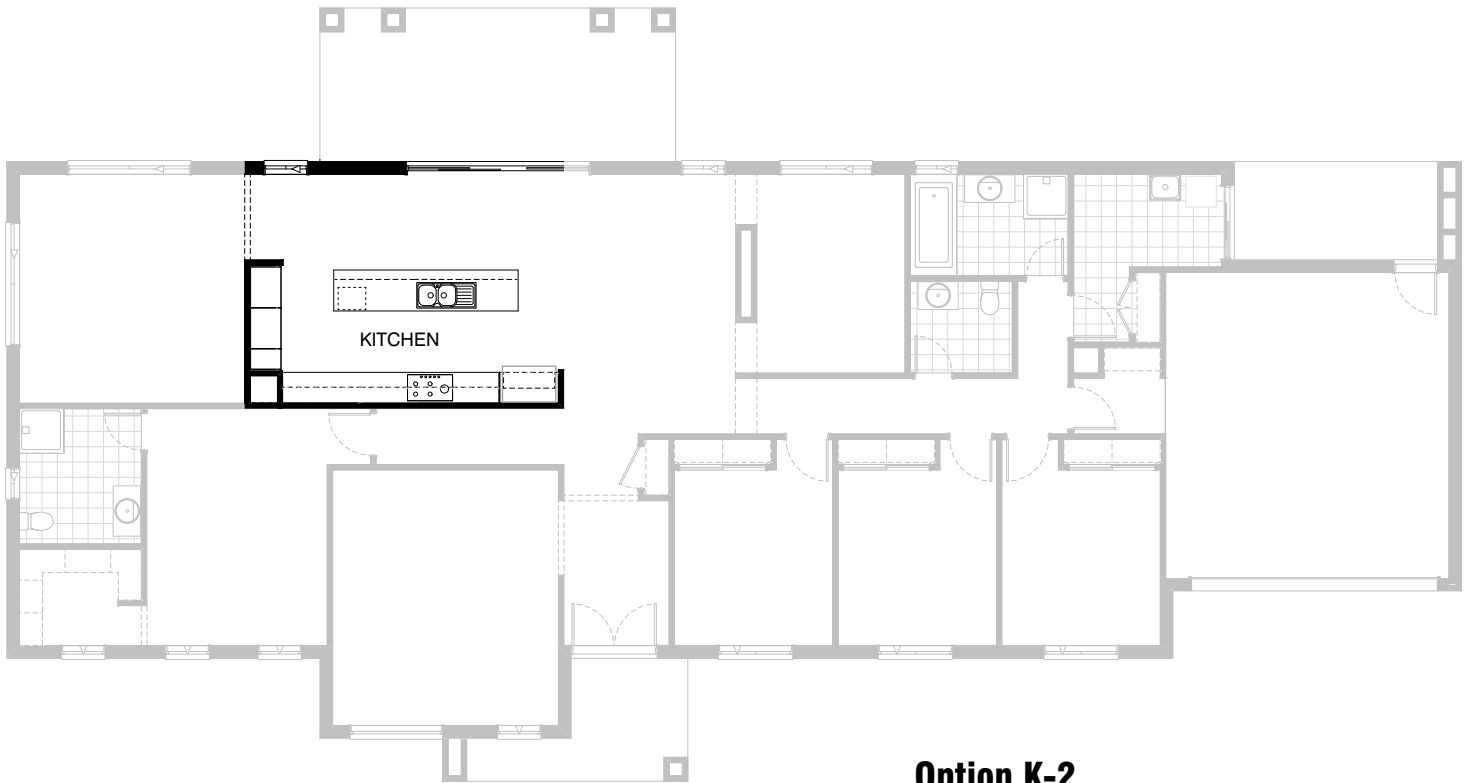


Option K-1

Provide Kitchen upgrade by deleting Study and extending WIP to create Butlers Pantry. Decrease Family width by 60mm and decrease Meals by 32mm to suit. Provide additional 1no. laminated MW provision, 5no. 900mm base cupboards, 1no. laminated DW provision, 1no. 450mm drawers, 1no. laminated open shelf above refrigerator space, 2no. 900mm overhead cupboards, 1no. 900mm under bench oven with 900mm hotplate and retractable rangehood over, 1no. 1050mm blind carcass with 600mm door, 1no. 600mm base cupboard, 3no. 700mm overhead cupboards, 4no. 450mm shelves and 1no. single bowl sink with additional tiled splashback and benchtop to suit.

FLOORPLAN OPTIONS

 **4**  **2.5**  **2**

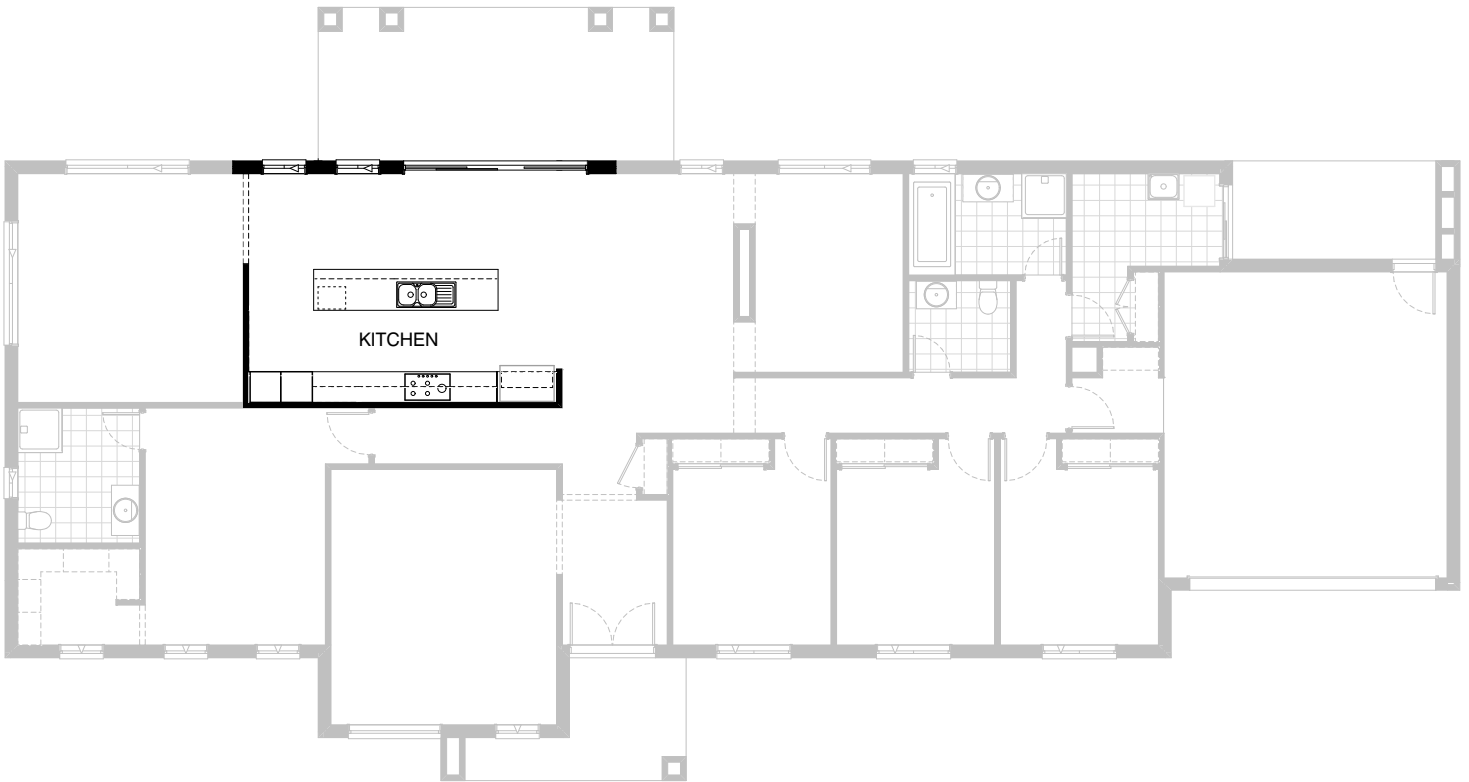


Option K-2

Provide Kitchen upgrade by deleting Study and WIP and provide additional 2no. 800mm laminated tall pantries, 1no. laminated 400mm tall pantry, 1no. laminated MW provision, 5no. 900mm base cupboards, 1no. laminated DW provision, 1no. 450mm drawers, 1no. laminated open shelf above refrigerator space, 1no. 900mm under bench oven with retractable rangehood and hotplate over and 1no. 600mm base cupboard with additional tiled splashback and benchtop to suit.

FLOORPLAN OPTIONS




 **4**  **2.5**  **2**



Option K-3

Provide Kitchen upgrade by deleting Study and WIP and provide additional 2no. 600mm laminated tall pantries, 5no. 900mm base cupboards, 1no. 900mm underbench oven with hotplate and retractable rangehood over, 3no. 900mm overhead cupboards, 1no. laminated open shelf above refrigerator space, 1no. 450mm drawers, 1no. laminated DW provision and 1no. laminated MW provision with additional tiled splashback and bench top to suit.

FLOORPLAN OPTIONS




 **4**  **2.5**  **2**



Option LD-1

Provide Laundry upgrade including insert trough, 2no. 900mm base cupboards, 2no. 900mm overhead cupboards including additional benchtop and splashback to suit.

FLOORPLAN OPTIONS




 **4**  **2.5**  **2**



Option ENS-1

Provide Ensuite upgrade by reducing WIR by 100mm including 1no. 1800mm x 900mm tiled shower base, 1no. 1482mm vanity unit with double bowl and 1no. 1027mm x 610mm aluminium sliding window in lieu of standard.

FLOORPLAN OPTIONS




 **4**  **2.5**  **2**



Option IP1-1

Provide Butlers Pantry in lieu of WIP including increase Butlers width by 100 and decrease Family width to suit. Provide additional plaster lined walls, 2no. 800mm base cupboards, 1no. single bowl sink and additional benchtop and splashback to suit.

FLOORPLAN OPTIONS




 **4**  **2.5**  **2**



Option IP1-2

Provide Study in lieu of Media by removing centre wall column and bulkheads and provide single plaster lined wall and double 820mm flush panel hinged doors.

FLOORPLAN OPTIONS




 **4**  **2.5**  **2**

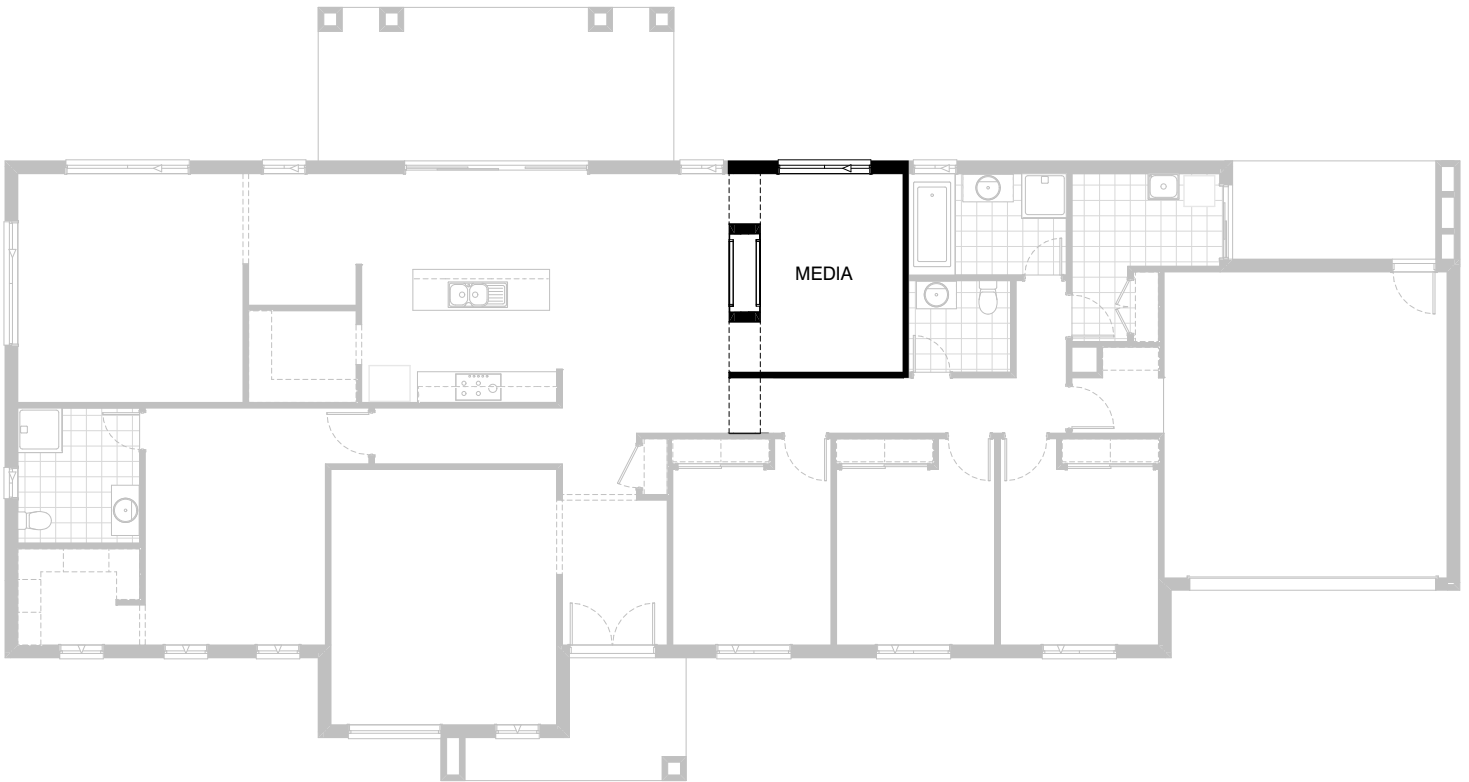


Option IP1-3

Provide Bed 5 in lieu of Media by removing centre wall column and bulkheads and provide single plaster lined wall, 820mm flush panel door, additional plaster lined walls to create robe including 450mm shelf and hanging rail and provide double 720mm flush panel door unit.

FLOORPLAN OPTIONS




 **4**  **2.5**  **2**



Option IP1-4

Provide Jetmaster Heat and Glow Mezzo 1300ST 2-way fireplace between Meals and Media room.
Note: Decrease Media width by 90mm and decrease Meals width by 95mm to suit.

FLOORPLAN OPTIONS




 **4**  **2.5**  **2**

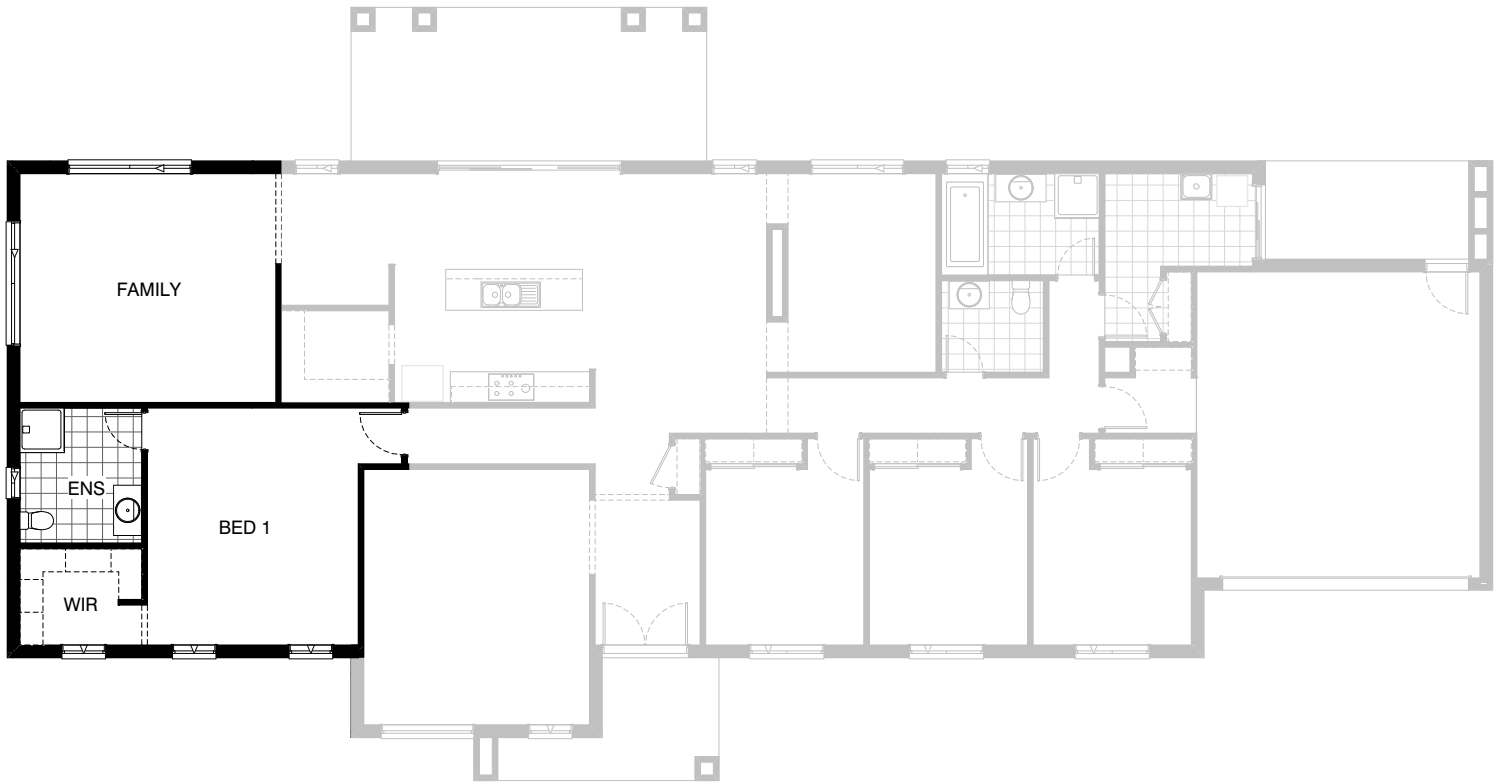


Option IP1-5

Provide Study Nook upgrade including 32mm laminate benchtop, 600mm deep by 2100mm long with 1no. 450mm double floating drawer unit below, 1no. 32mm laminated floating shelf above at 300mm deep by 1050mm long.

FLOORPLAN OPTIONS




 **4**  **2.5**  **2**

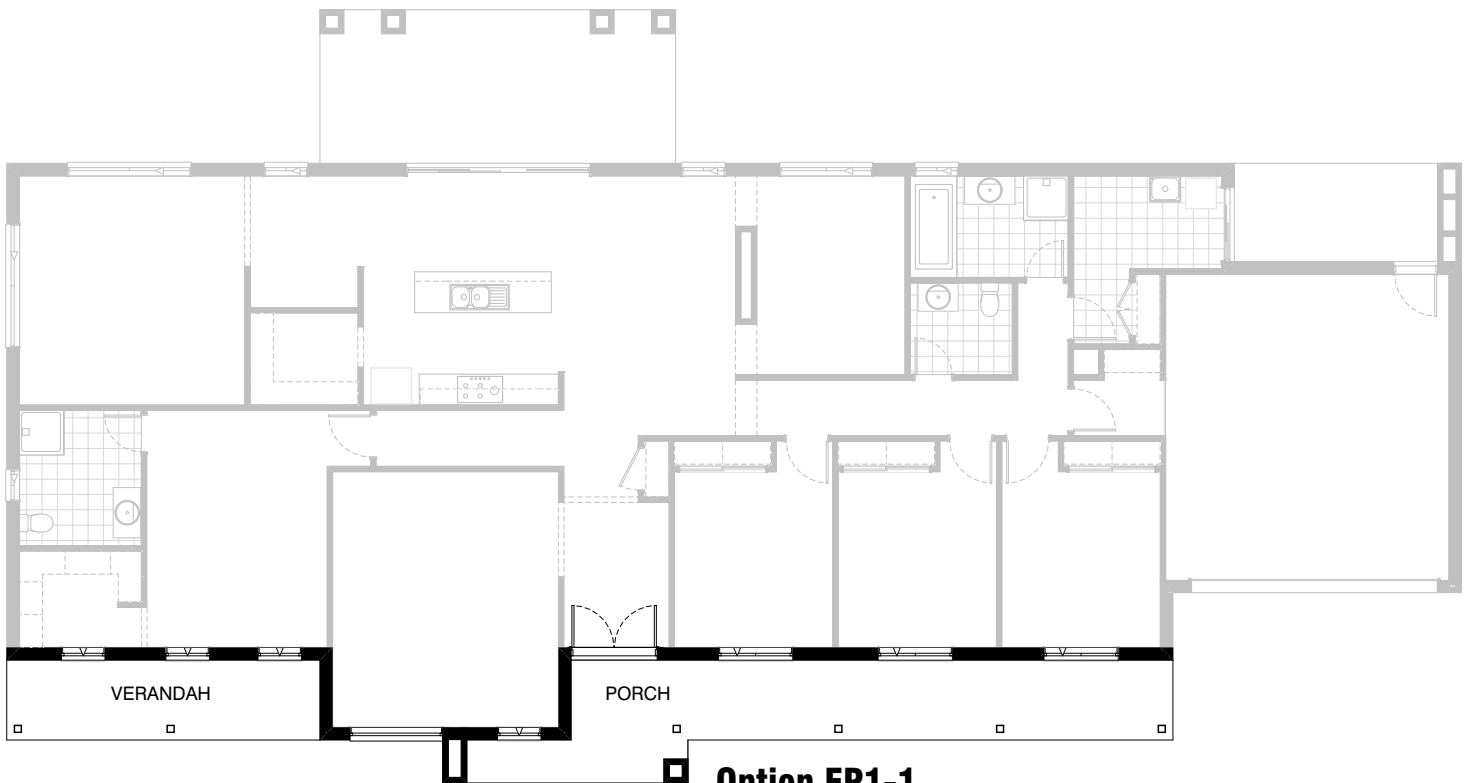


Option IP1-6

Increase Family/Bed 1 width by 600mm and adjust Bedroom 1 windows to suit.
Increase area by 5.82m².

FLOORPLAN OPTIONS

 **4**  **2.5**  **2**






Option EP1-1

Provide Verandah to dwelling frontage including additional roof, structural concrete floor, 6no. 135mm x 135mm timber posts on stirrups with painted finish, structural lintels and cement sheet ceiling lining with painted finish.

This option only applies to the Drysdale, Arkley & Dowd Facades

FLOORPLAN OPTIONS




 **4**  **2.5**  **2**

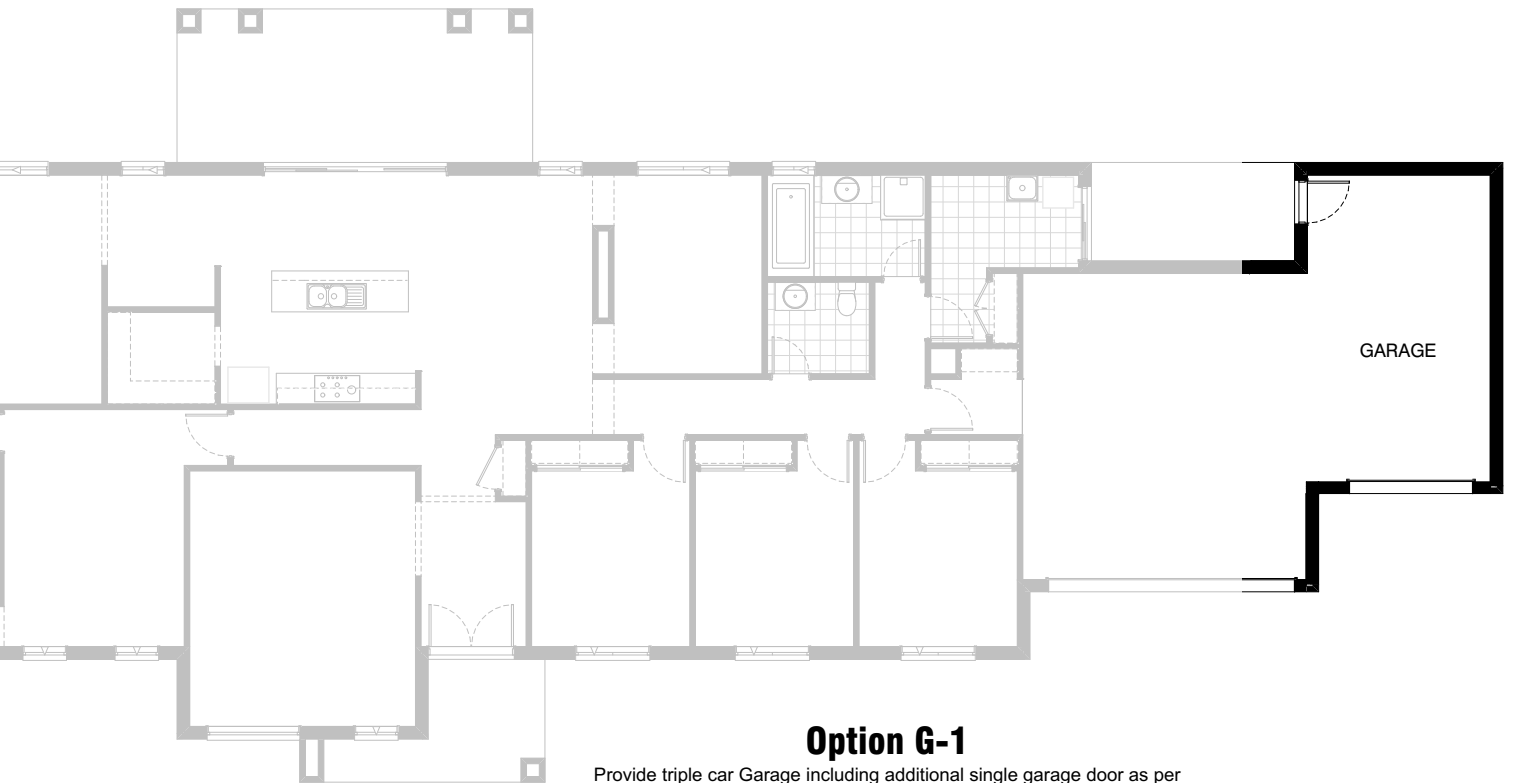


Option EP1-2

Provide Grand Alfresco by extending length by 1440mm. Increases area by 10.00m².

FLOORPLAN OPTIONS

 **4**  **2.5**  **2**



Option G-1




Provide triple car Garage including additional single garage door as per colour selection including relocate garage access door.

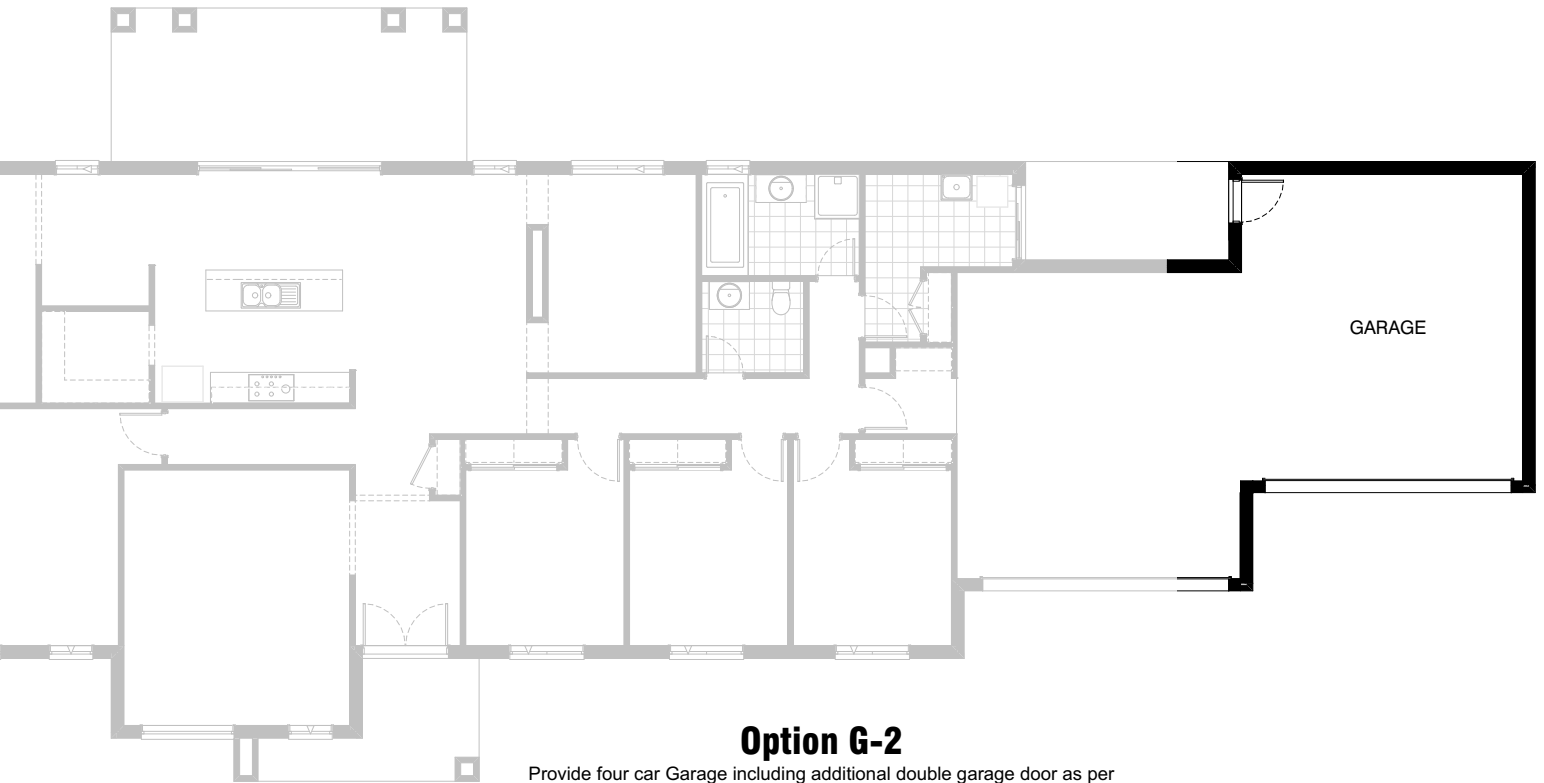
Increases area by 24.19m².

Increases width by 3600mm.

Note: Reduces Verandah by 0.9m².

FLOORPLAN OPTIONS

 **4**  **2.5**  **2**



Option G-2

Provide four car Garage including additional double garage door as per colour selection including relocate garage access door.

Increases area by 36.62m².

Increases width by 5520mm.

Note: Reduces Verandah by 0.9m².